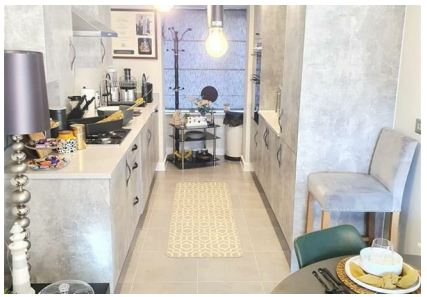
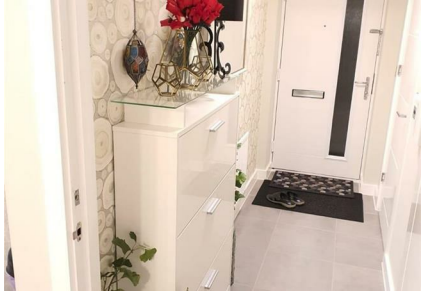


Woodlands Place, Blythe Valley Park, Shirley, Solihull, B90 8AY

£1,795 Per Month

Council Tax Band: D



This well-presented three-bedroom semi-detached property offers modern and practical living accommodation with a reception room, fitted kitchen, and family bathroom, ideal for families or professional tenants.

Key Features:

Three-bedroom semi-detached house with fitted kitchen, family bathroom, rear garden, off-street parking, and furnished or unfurnished options.

Location Highlights:

Situated at Woodlands Place in Blythe Valley Park, Shirley, Solihull, the property is close to local amenities, schools, and excellent transport links with convenient commuter access.



404 Derby Street, Bolton, BL3 6LS
 01204 589600
 bolton@localagent.co.uk
 www.openhousebolton.co.uk



Energy Efficiency Rating		
	Current	Potential
Very energy efficient - lower running costs		
(92 plus) A		
(81-91) B	85	
(69-80) C		
(55-68) D		
(39-54) E		
(21-38) F		
(1-20) G		
Not energy efficient - higher running costs		
England & Wales	EU Directive 2002/91/EC	